

52 Bedford Road, Firswood, Trafford, M16 0JA



JP&Brimelow
ESTATE AGENTS

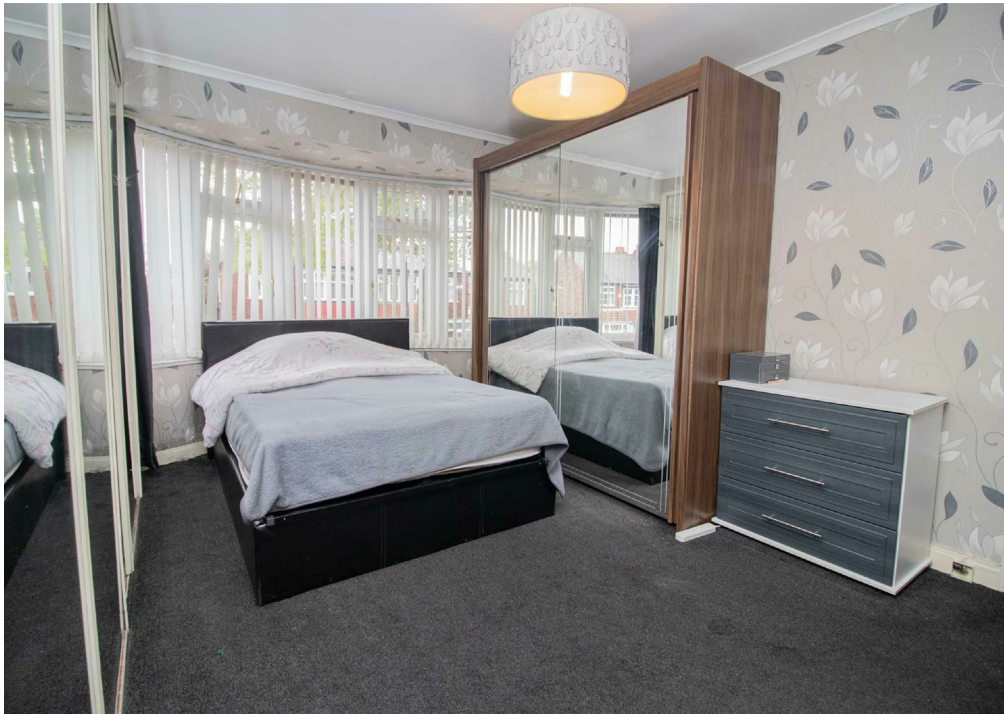
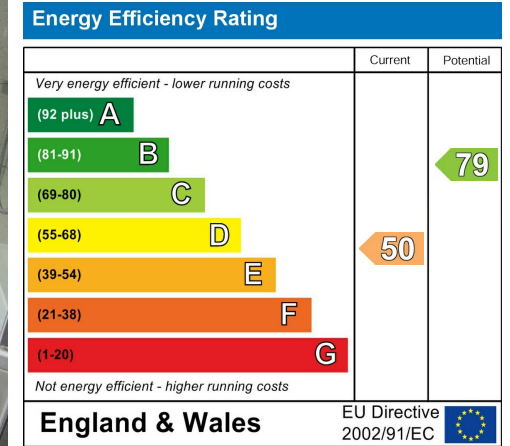
Offers In The Region Of £350,000

A beautifully presented, THREE BEDROOMED, bay fronted, semi-detached property. Situated on a popular residential road, off Rye Bank Road here in Firswood. Walking distance of Chorlton Centre, only a ten-minute drive from Manchester City Centre, and moments away from the Metrolink station also on Rye Bank Road (Firswood), giving you direct access to Media City and City life. Well positioned for the local amenities in Chorlton and locally on Warwick Road South, the property is also close to several good Trafford Primary Schools nearby, the Hilary Step Bar and Jam Street Cafe on Upper Chorlton Road. The well-planned accommodation comprises; entrance hall, through lounge/dining room with access out into the rear enclosed, lawned garden and a stunning kitchen, with access into the rear enclosed garden. To the first floor there are three well-proportioned bedrooms and a modern fitted white three-piece family bathroom. The property benefits from a large driveway to the front, providing ample parking for multiple vehicles & a private rear enclosed, lawned garden, warmed by gas fired central heating and double glazing. Would suit a professional couple or a young family due to the location.



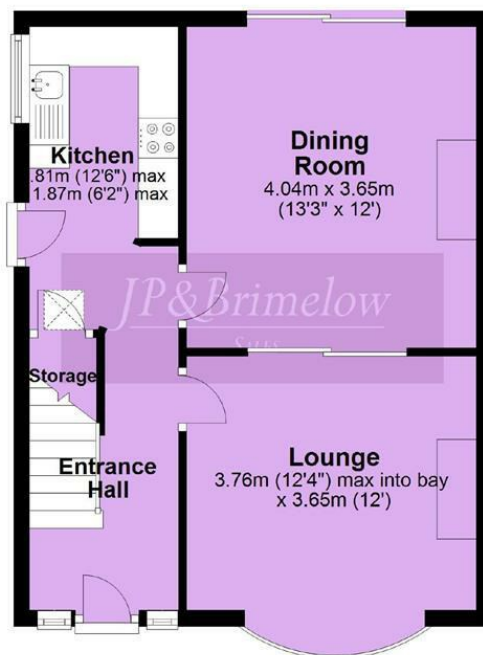


EPC Chart

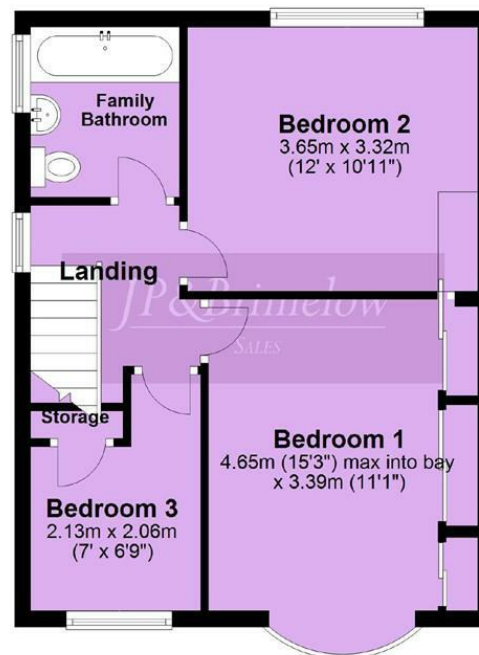


Tenure: Leasehold Council Tax Band: C

Ground Floor



First Floor



Chorlton & Didsbury Ltd
430 Barlow Moor Road, Chorlton, Manchester, M21 8AD
Chorlton: 0161 882 2233 Didsbury: 0161 448 0622
E: chorlton@jpbrimelow.co.uk www.jpbrimelow.co.uk



JP & Brimelow
ESTATE AGENTS

NOTICE: J P & Brimelow Chorlton & Didsbury Ltd for themselves and for the vendors or lessors of this property whose agents they are give notice that:

- (i) the particulars are set out as a general outline only for the guidance of intending purchasers or lessees, and do not constitute, nor constitute part of, an offer or contract;
- (ii) all descriptions, dimensions, references to the condition and necessary permissions for use and occupation, and other details are given in good faith and are believed to be correct but any intending purchasers or tenants should not rely on them as statements or representations of fact but must satisfy themselves by inspection or otherwise as to the correctness of each of them;
- (iii) no person in the employment of JP & Brimelow Ltd has any authority to make or give any representation or warranty whatever in relation to this property.



Follow us on Twitter @jpandbrimelows